

# RADSIGHT GETTING STARTED - INSTALLATION AND SETUP FOR STANDALONE SYSTEMS AND TERMINALS

V1.4 June 2025

This document provides instructions and guidance to install RadSight on a Windows computer and to get started using it.

## 1 WINDOWS DESKTOP INSTALLATION

RadSight should be installed on a Windows 10 or Windows 11 computer. Make sure that the computer meets the minimum requirements for installation, see below.

### Full list of supported Windows desktop versions

- Windows 10 October 2018 Update (version 1809) (x64)
- Windows 10 November 2019 Update (version 1909) (x64) or later Windows 10
- Windows 11

If your computer has an earlier version, it will need to be upgraded by applying the appropriate Windows upgrades or Service Packs.

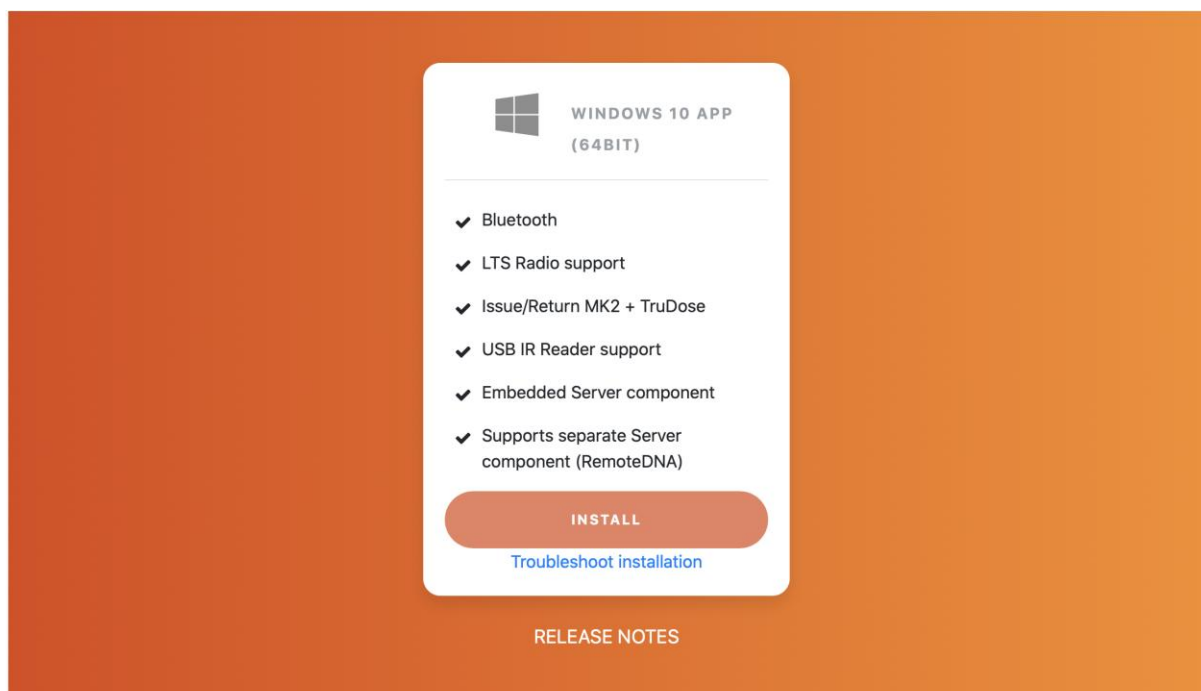
Additionally, make sure that the computer has been fully updated through Windows Update.

### Standard RadSight installation

Make sure your computer has a reliable internet connection.

Open a browser and go to the Charthouse download site at <https://download.radsight.com/>.

Click on the INSTALL button and wait for the package to download. Open the downloaded file (*RadSight Package Installer.exe*) and follow the prompts to install the RadSight App and server component. This will install all required components on a single computer.



### Installing a separate server and/or multiple clients

Separate files for installing server component and client can be downloaded from the download site.

Use the link at the bottom of the page 'Download RadSight Installer Files' and then select the files to

be downloaded as needed. For guidance on installing distributed systems, use the part CDM53002 'RadSight System Administrators Guide'.

RADSI<sup>HT</sup>

## RadSight Installers

### Server Component Installer (RemoteDNA Platform)

Use this installer to install the server component only. This is useful when you have many RadSight applications, and wish to connect to a central server.

[DOWNLOAD \(151.9 MB\)](#)

### RadSight Access Desktop App and Server combined installer

This installs the RadSight application and discrete server component in a combined installer. This is useful when you want to run RadSight Access standalone on a Desktop PC.

[DOWNLOAD \(360.0 MB\)](#)

### RadSight Access Desktop App only installer

This installs the RadSight application. This is useful when you want to run RadSight on a Desktop PC connected to an existing server.

[DOWNLOAD \(232.5 MB\)](#)

### RadSight Terminal / RadSat (USB)

This downloads the files which need unzipping onto a USB stick, in order to upgrade your RadSight Terminal, or RadSat.

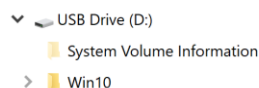
[DOWNLOAD \(255.4 MB\)](#)

## 2 UPGRADING A RADSI<sup>HT</sup> TERMINAL OR RADSAT

This software can be easily upgraded using a USB drive containing the files. Use the USB drive which was sent to you, or you can create one from downloaded files as follows:

Click on the link '[Download RadSight Installer Files](#)' and select the *RadSight Terminal / RadSat* download option. The files will be downloaded to your computer in a zip file.

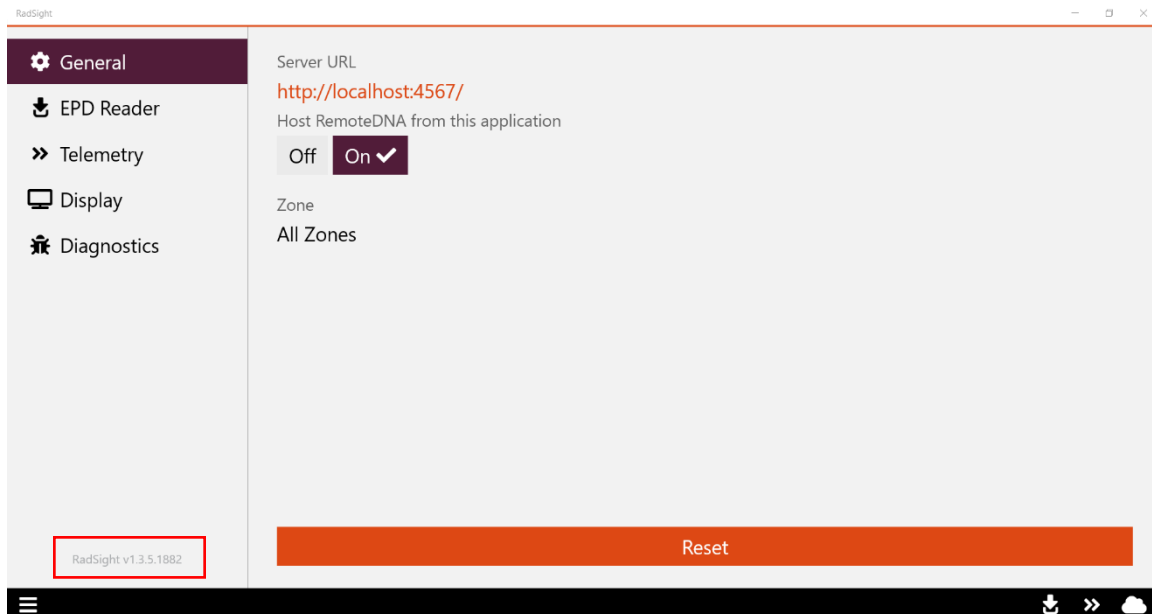
Open the zip and extract the folder called Win10. Now copy this entire folder called *Win10* onto the root of your USB drive. It should look like this:



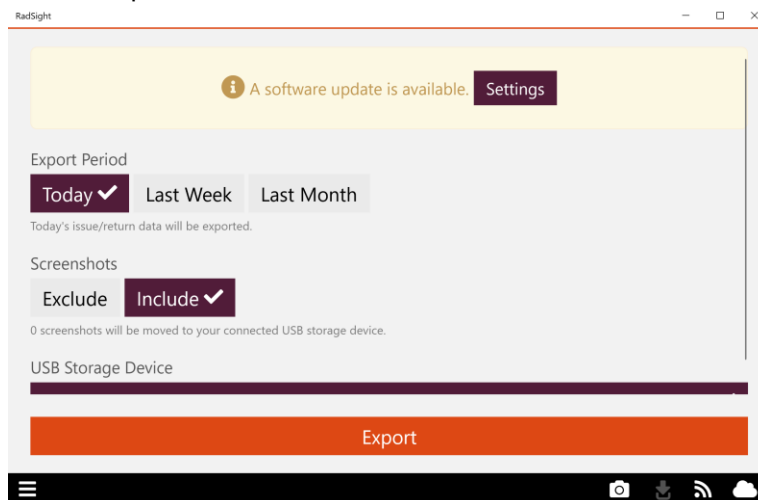
The software is upgraded using this USB drive as follows:

- 1) Turn the terminal device on and wait for the RadSight application to launch.
- 2) Insert the RadSight installation USB memory device into the USB port on the underside of the device (or in the radio pod on a RadSat).

- Click the menu button at the bottom left ('Hamburger button') and select the Settings tab. Make a note of the version number of the application (found at the bottom left of the settings page).



- Navigate to the Export page (or any settings page) and you will a menu item indicating a software update is available:



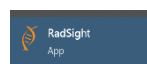
Select the settings button and then click *Update Now*. This will start the update process and your device may restart. Wait for the process to finish before shutting down the device.

- Navigate back to the settings page, by clicking the menu button at the bottom left and selecting the settings tab. Ensure that the version number has now changed to the new version. You can now remove the USB.

## 3 GETTING STARTED

There will now be a link to an App in the Start menu.

Use this link to run the RadSight App and it will guide you through the setup process.



- 1) When the system is first run, a small amount of initialisation is required. Start the RadSight software by clicking on the icon and wait for it to start up. If you see a message saying, 'Server Setup Required' click the menu button at the bottom left 'Hamburger button' and select the Settings tab. Click the reset button to re-start the initialisation process.
- 2) If you are using a Thermo EPD reader, plug the EPD reader into a USB port on the computer. If you are using Polimaster RadFlash EPDs, leave this step until later. The reader is usually the one that is supplied with your EPDs and is either a white desktop platter, a black dock with a slot, or a smaller white dongle unit. When using a white TruDose IR reader, there is no need to install special drivers.
- 3) The first configuration step is to specify where the RadSight server component is running. This is the Windows service that processes the data and stores it in a database (it is also known as RemoteDNA). This service will be running on the same computer as the app, so you can use the default value of 'https://localhost:4568'. The 'Host RemoteDNA' option must be On.

### Getting Started

Welcome to RadSight! To get things under way, please enter the URL of the server you'd like to connect to:

https://localhost:4568/

Host RemoteDNA from this application ☐ Off ☒ On ✓

Previous Next

Select the Next button to progress to the next step.

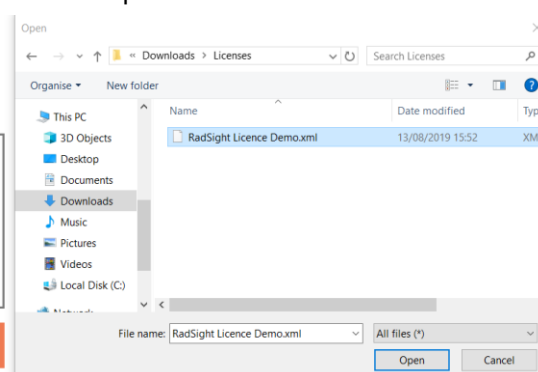
- 4) The next step is to enter the demo license that will enable a fully featured version of the RadSight software. This license is an XML file that should be supplied by your representative or agent. Click 'Select license file' and navigate to where the file is located. Alternatively, you can copy and paste the contents of the file into the entry field and click Next. When the license is verified it will automatically move to the next step.

### RemoteDNA Licence Management

License Key

Enter your license key XML here...

Previous Select license file Next



- 5) You will now be prompted to create an administrator account. **NOTE** This is an important step as the account name and password will be needed to perform administration on the system. You must store this information in a safe place. Enter a user name, which is typically an email address from your organisation e.g. [dosimetry@anhospital.com](mailto:dosimetry@anhospital.com). The password must be secure and so it must contain at least 6 characters including an upper-case letter, a number and a special character (e.g. !"£\$%). Enter the password twice and when it is accepted it will move to the next step.

## RemoteDNA Setup

To get started, create a system administrator account.

Previous
Next

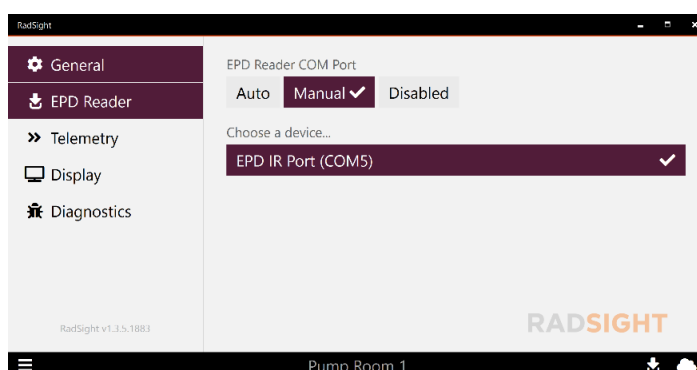
- 6) You will now be asked to specify a zone. At this point there are no zones created so just accept the default of "All Zones". Zones can be used when there is more than one issue point for EPDs. They can be defined later from the administration screens.

## Select Zone

Select which zone your EPD reader is for:

Previous
Next

- 7) If you are using Polimaster RadFlash EPDs, you can now configure the Bluetooth device for these. You must use the Bluetooth USB device (dongle) that is supplied when you order these devices. This can also come in the form of a dock with a slot for the EPD to be placed in. Plug this in to a convenient USB port. Now navigate to the Settings/EPD reader page and verify that the EPD reader COM port is set for the USB device. If necessary, use the Manual setting to select the device from a list.
- 8) Next select Issue/Return from the menu at bottom left and you will see the Issue/Return page. If a suitable EPD reader device cannot be found the EPD reader icon (right) will be greyed out. In this case:
  - a) Use the menu button at bottom left ('Hamburger' button) and select the Settings menu. Select EPD Reader and this will say "A suitable device cannot be found".
  - b) Select the Manual option and a list will appear. Look for an entry called "EPD IR port" or "IR reader" for a Thermo EPD or "BleuIO" for a RadFlash. The exact wording depends on the type of reader installed. Return to the Issue/Return page using the menu button at bottom left.



- c) The system is now ready for use and you can issue an EPD and start using the system. Refer to the user handbook for help in using system features.

## **Upgrading**

The RadSight App can be upgraded by following the same process as for installation but first uninstall the old version of software.